



***STRAW***

**-**

***MASTER***

## **STRAW BLOWER**

Operation & Maintenance

Manual

**Spruce Crest Enterprise**

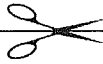
1599 Three Bridges Rd  
St. Jacobs ON N0B 2N0  
Ph 519-664-1883  
Fax 519-664-2499

The content of this manual is owned  
and copyrighted by Spruce Crest Enterprise

## **Table of Contents**

Warranty Registration Card	4
Warranty	5
For Your Record	6
General Safety	7
Hydraulic Safety	9
Safety Sign Off Form	10
Decal Locations	11
Operating Safety	12
Handheld Remote	13
Attaching	14
Operating	15
Troubleshooting	16
Maintenance	17
Notes	19

## Warranty Registration Card



### Spruce Crest Enterprise

1599 Three Bridges Rd  
St. Jacobs ON N0B 2N0

*Purchaser's warranty protection is only valid when this form is filled to completion and returned to Spruce Crest Enterprise at the above address. By filling out this form the purchaser acknowledges delivery of equipment, operator's manual and accepts the condition of the equipment.*

Equipment Type \_\_\_\_\_

Model # \_\_\_\_\_ Serial # \_\_\_\_\_

Delivery Date \_\_\_\_\_

#### Purchaser's signature indicates

- *Acceptance of equipment fully assembled and setup*
- *Received operator's manual*
- *Received instructions of safe and proper operation of equipment*
- *Clearly understands warranty conditions*

Purchaser \_\_\_\_\_

Company \_\_\_\_\_

Address \_\_\_\_\_

City \_\_\_\_\_ Prov/State \_\_\_\_\_ Postal Code/Zip \_\_\_\_\_

Phone \_\_\_\_\_

Email \_\_\_\_\_

**Purchaser Signature** \_\_\_\_\_

#### Retailer's signature indicates

- *Equipment is assembled as directed by manufacturer*
- *Equipment has been tested for functionality and operates as intended*
- *Purchaser has been given the operators manual*
- *Purchaser is instructed in safe operating procedures*
- *Warranty is explained to purchaser*

Retailer \_\_\_\_\_

Address \_\_\_\_\_

City \_\_\_\_\_ Prov/State \_\_\_\_\_ Postal Code/Zip \_\_\_\_\_

Phone \_\_\_\_\_ Email \_\_\_\_\_

**Retailer Signature** \_\_\_\_\_

Warranty is only valid when registration card has been received by manufacturer.

## **Warranty and Limitations of Liability**

All equipment is sold subject to mutual agreement that it is warranted by Spruce Crest Enterprise (Hereafter called the company) to be free of any defects in material and workmanship. The Company shall not be liable for special, indirect or consequential damage of any kind under this contract or otherwise. The Company's liability shall be limited exclusively to replacement or repair without charge at its factory or elsewhere, at its discretion, any materials or defects, which become apparent within one year from the date of original purchase. In no event shall Spruce Crest Enterprise be liable for special, direct or incidental or consequential damages of any kind. The purchaser by acceptance of the equipment will assume all liability for damage which may result from use or misuse by the operator. The purchaser shall maintain and service the equipment as recommended in the Operator's Manual.

This warranty does not cover **Rental/Commercial or Industrial** use of the equipment. This equipment is rated as agricultural.

For **Rental/Commercial or Industrial** use, Warranty is for defective material and workmanship for a period of 90 days from the date of original purchase.

Warranty is null and void unless the **Warranty Registration Form** has been completed and on file at:

### **Spruce Crest Enterprise**

1599 Three Bridges Rd  
St. Jacobs ON NOB 2N0  
Ph 519-664-1883  
Fax 519-664-2499

# ***STRAW - MASTER***

STRAW BLOWER  
Operation & Maintenance Manual

---

## **For your record**

Purchase Date \_\_\_\_\_

Model # \_\_\_\_\_

Serial # \_\_\_\_\_

Notes:

Your local dealer:

Manufactured by

### **Spruce Crest Enterprise**

1599 Three Bridges Rd

St. Jacobs ON N0B 2N0

Ph 519-664-1883

Fax 519-664-2499

## **Safety**

### **Warning!**

- Read and understand operator's manual and all other safety instructions before using this equipment.
- Failure to follow operating instructions could result in serious injury or death.

**ATTENTION:** This symbol identifies potential health and safety hazards. It marks safety precautions.



**ATTENTION:** Your safety and the safety of others is involved.

**BE ALERT!**



**DANGER** - Indicates an imminently hazardous situation which, if not avoided, will result in death or serious injury. This signal word is limited to the most extreme cases.



**WARNING** - Indicates a potentially hazardous situation which, if not avoided, could result in death or serious injury.



**CAUTION** - Indicates a potentially hazardous situation which, if not avoided, may result in minor or moderate injury and/or property damage. It may also be used to alert against unsafe practice.

For any questions not answered in this manual, please contact your dealer or:

### **Spruce Crest Enterprise**

1599 Three Bridges Rd  
St. Jacobs ON NOB 2N0  
Ph 519-664-1883  
Fax 519-664-2499



## **Safety - It's in your interest**



### **Safety Guidelines**

- Safe operation is one of our main concerns, however it is up to the operator to practice caution.
- To avoid personal injury, study the following precautions and insist that those working with you follow them.
- **DO NOT** allow persons to operate this machine until they have read this manual and/or been instructed by a qualified person.
- This equipment shall **NOT** be operated by those unfamiliar with the operation of the Strawmaster shredder.
- **DO NOT** use this machine while under the influence of drugs or alcohol.
- Review all safety instructions annually with operators.
- The Strawmaster has only 2 shields, one shield covers the auger chain while the other is a shield for the power hood turner.
- Check that all guards are in place and securely fastened before starting machine.
- Replace any safety decals that may be missing or are unreadable. Location of decals are indicated in this manual.



Please be careful with the extra weight on the front of the skid steer. It may be necessary to add weights on the rear of the skid steer to keep it balanced properly.



When changing shear bolts or removing straw/bedding from the machine, **STOP** the engine and remove the key from the ignition before starting maintenance or removing guarding! This will reduce the possibility of the shredder being started and causing personal injury.



## Hydraulic Safety

Hydraulic systems do their work under very high pressure, in excess of 138 bar (2000 PSI).

A pinhole in a hydraulic line under pressure can cause an invisible stream of fluid to be ejected from the line. This stream can penetrate clothing, heavy gloves and skin!

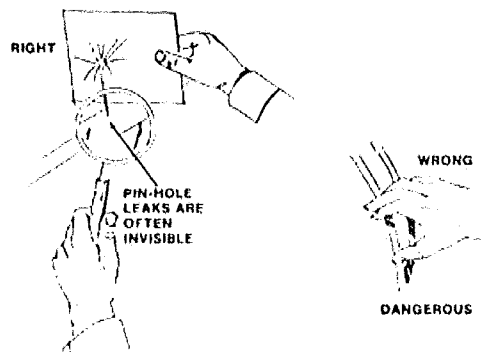
Hydraulic fluid can be hot enough to burn exposed skin.

When checking for suspected leaks, use a piece of wood or cardboard and run it along the hose to detect the leak. (See Fig. 1)

**WARNING!** Do **NOT** use your hand or fingers!

### Always wear

- Safety Glasses
- Long sleeves
- Gloves
- Use proper tools



Detecting pinhole leaks in a hydraulic system  
**Fig. 1**

## WARNING!

If the skin is penetrated the person will only feel a slight stinging sensation and may not think it serious. Several hours later, however the wound begins to throb, and severe pain begins. By the time a doctor is seen it is often too late, and the person loses a finger or the entire arm. Seek medical attention **immediately** if you suspect that the skin has been penetrated!

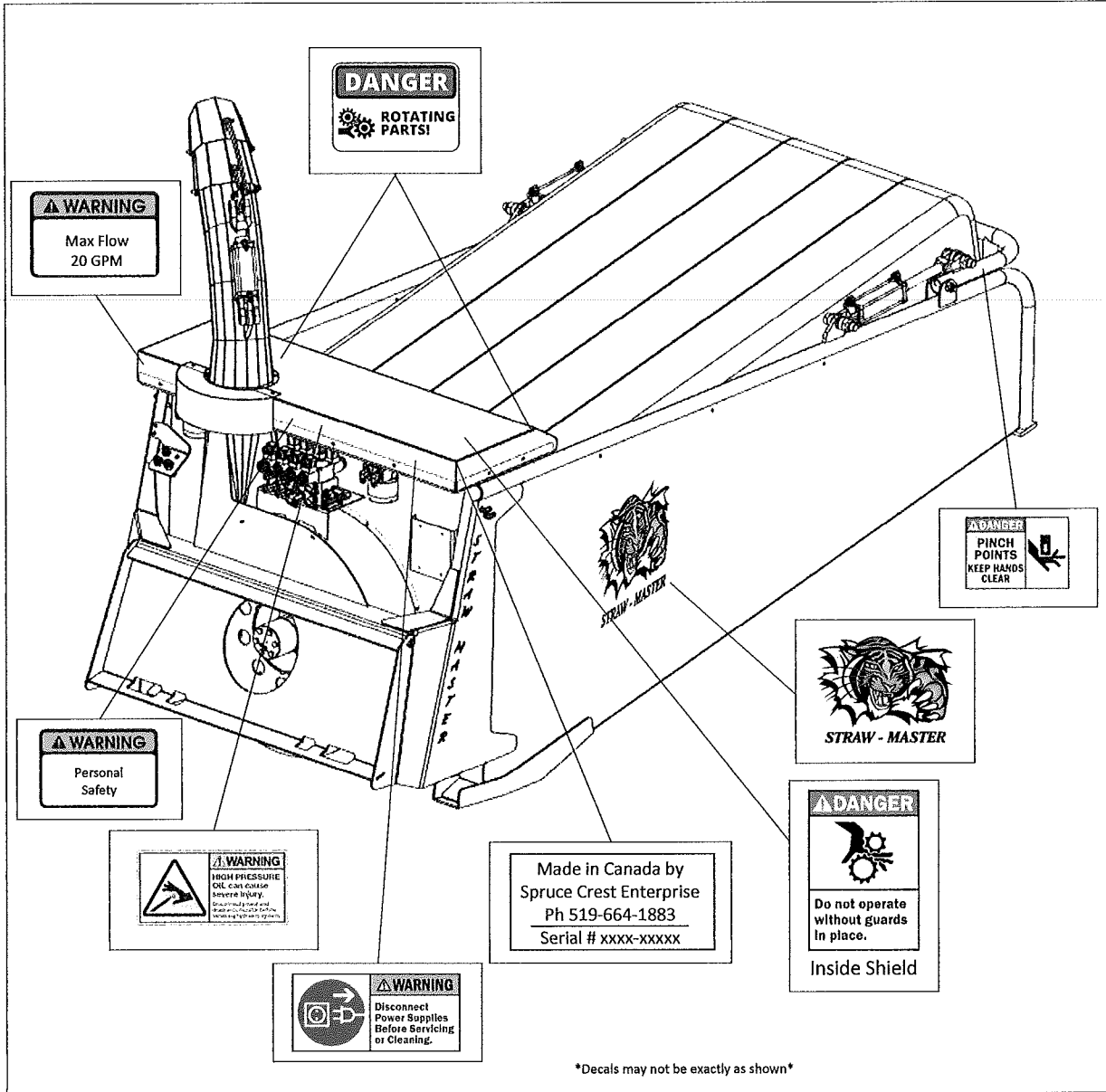
### Tips for Safe Operation

- Always lower the hydraulic working units to the ground before leaving the machine.
- Park the machinery where children cannot reach it.
- Block up the working units when you must work on the system while raised; **DO NOT** rely on the hydraulic lift.
- **Never** service the hydraulic system while the machine engine is running unless absolutely necessary (bleeding the system).
- **DO NOT** remove cylinders until the working units are resting on the ground or securely on safety stands or blocks; shut off the engine.
- Before disconnecting oil lines, relieve all hydraulic pressure
- Be sure all line connections are tight, and lines are not damaged; escaping oil under pressure is a fire hazard and can cause personal injury.
- When washing parts, use a non-volatile cleaning solvent.
- To ensure control of the unit, keep the hydraulics in proper adjustment.



# STRAW - MASTER

## STRAW BLOWER Operation & Maintenance Manual



Item #	Part #	Description	Quantity
1	STM00012	Straw Master Decal (Large)	2
2	No Replacement	Serial Tag	1
3	STM00031	12 V Power Disconnect	1
4	STM00041	High Pressure Fluid	1
5	STM00051	Personnel Safety	1
6	STM00061	Oil Flow Spec	1
7	STM00072	Rotating Part Warning	2
8	STM00081	Shield Placement	1
9	STM00091	Pinch Point	2



## OPERATING SAFETY

1. Read and understand all of this Operator's Manual and all safety signs before using.
2. Place all controls in neutral, stop engine, set park brake, remove ignition key, and wait for all moving parts to stop before servicing, adjusting, repairing, or unplugging.
3. **Do not** allow riders.
4. Clear area of bystanders, especially children before starting.
5. Keep hands, feet, hair, and clothing away from all moving and/or rotating parts.
6. **Do not** operate machine when any guards are removed.
7. Secure mounting hardware before operating.
8. Use machine only for intended purpose.
9. Review safety related items annually with all personnel who will be operating or maintaining this equipment.

## TO THE NEW OPERATOR OR OWNER

The Straw-Master bedding shredder is designed for bedding placement while attached to a skid steer. Be familiar with the machine before starting.

**In addition to the design and configuration of equipment, hazard control and accident prevention are dependent upon the awareness, concern, and prudence of personnel involved in the operation, transport, maintenance, and storage of equipment or in the use and maintenance of facilities. It is the responsibility of the owner or operator to read this manual and to train all other operators before they start working with this machine. Follow all safety instructions exactly. Safety is everyone's responsibility. By following the recommended procedures, a safe working environment is provided for the operator, bystanders, and the area around the worksite. Untrained operators are not qualified to operate this machine.**

Many features incorporated into this machine are the result of suggestions made by customers like you. Read this manual carefully to learn how to operate the machine safely and how to set it to provide maximum efficiency. By following the operating instructions in conjunction with a good maintenance program, your shredder will provide many years of trouble-free service.

## StrawMaster Bedding Machine

The StrawMaster is a skid steer front mounted attachment for livestock bedding management. The StrawMaster is designed for a 75-110 hp skid steer with an oil flow of 20-30 gpm @ 3000 psi.

### Handheld Remote

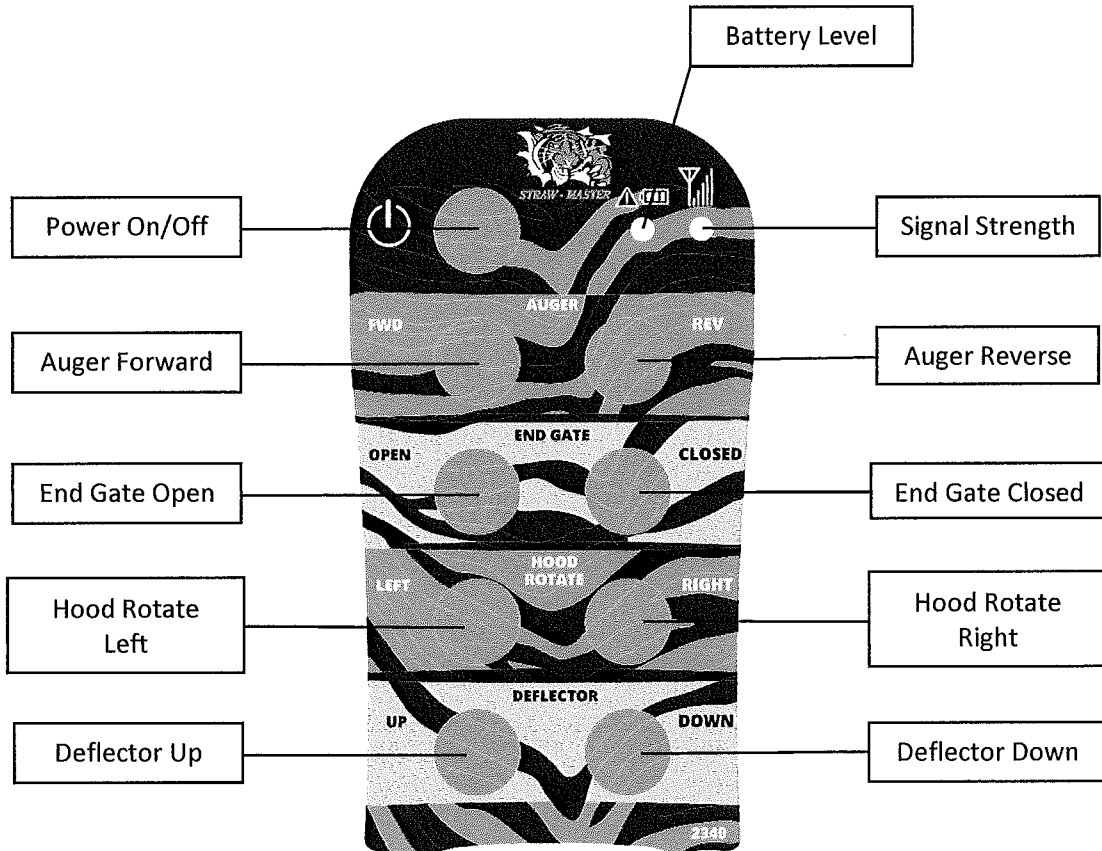


Fig. 2

## **Attaching the StrawMaster**

- Set attachment on level ground and drive up with skid steer plate tilted forward
- When touching attachment back plate slowly lift the lift arms and roll back at the same time to ensure proper seating of attachment plate.
- Engage bucket locks and ensure they are locked properly.
- Next attach hydraulic hoses to boom aux. plug (3 hoses, pressure, return, case drain)

**Warning!** This attachment must only be operated with the case drain attached. Using without case drain attached will void warranty.

- Attach 12-volt power supply (magnetic power bank optional)
- Slowly roll attachment back all the way to ensure no hoses or shields hit skid steer frame causing damage or excessive wear.
- Engage auxiliary and latch function to test the functions of attachment and to check for correct fan rotation.
- Check all functions on handheld remote (See Fig. 2) to ensure correct unit pairing and programming. (Ensure remote is turned on before pairing and programming)
- While machine is running, slowly increase speed to ensure smooth operation.
- Attachment mounted flow divider should be set at 5 to split auxiliary flow 50/50 to fan and valve block. (Do not go below 3 or exceed a setting of 7 on the hydraulic flow control.)

**Warning!** Operating the StrawMaster with the hydraulic flow control set outside of the recommended range will cause damage to the unit. Make sure the flow control is set no lower than 3 and no more than 7.

## **Operating the StrawMaster**



**NEVER** operate the StrawMaster with guarding removed.



Use extreme caution while operating the StrawMaster due to reduced visibility.



Always stay in the operator's seat while the StrawMaster is running.



Make sure area is clear of people while loading and bedding.



Do **NOT** direct discharge toward people. Stones or other hard objects can go long distances.

## **Loading the StrawMaster**

**Warning!** Make sure beaters are disengaged while loading material in StrawMaster.

1. Engage auxiliary hydraulic function on skid steer.
2. Open the tailgate by pressing and holding the "End Gate Open" button on the remote.
3. After tailgate is open, slowly roll StrawMaster forward and lower to the ground before scooping into bale.
4. When bale is loaded roll attachment back and close the tailgate.
5. Turn auxiliary hydraulics off and set parking brake before dismounting operator station to remove strings from bale.
6. Remove strings from bale.
7. Roll the StrawMaster forward before engaging beaters.

## **Shredding Material**

**Warning!** Make sure the StrawMaster attachment is rolled forward before engaging beaters. Material weight on the beaters will cause serious machine damage.

1. Engage auxiliary hydraulic function on skid steer.
2. Run skid steer at full RPM before introducing material to beaters.
3. With beaters engaged and engine running at full RPM slowly roll the StrawMaster back. Gravity will pull material against the beaters.
4. Chute rotate and height is controlled with the handheld remote to apply a uniform layer of bedding.
5. Upon job completion, disengage auxiliary hydraulics before driving, parking skid steer, and dismounting operators' station.

## **Troubleshooting**



Before removing any guards, attempting any maintenance, trouble shooting, or making adjustments; set the parking brake, **STOP** the engine, and remove the key from the ignition. This will reduce the possibility of the shredder being started and causing personal injury.

**Warning!** Ensure all rotating parts have completely stopped before opening shields or reaching into augers and fan.

### **Blocked Beater**

1. In the event of a blockage, push and hold the reverse button (for the desired time to clear blockage) on the handheld control. Reverse button is spring loaded and will not stay engaged unless manually held.

### **Plugged fan**

1. In the event of a plugged fan, disengage auxiliary hydraulics, set the parking brake, turn off the engine, and remove the key from the ignition.
2. Ensure all rotating parts have stopped before removing any guards or attempting to remove blockage.
3. Once it is safe to do so, reach in and remove blockage from fan.
4. Install all guards before starting engine.



## Maintenance



Before removing any guards, attempting any maintenance, trouble shooting, or making adjustments; set the parking brake, **STOP** the engine, and remove the key from the ignition. This will reduce the possibility of the shredder being started and causing personal injury.

**Warning!** Ensure all rotating parts have completely stopped before opening shields or reaching into augers and fan.

- See Fig. 6 for machine breakdown.

## Bale Deck

- Apply dry graphite to the bale deck for the first 30 hours or as needed.

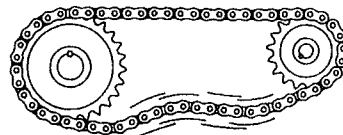
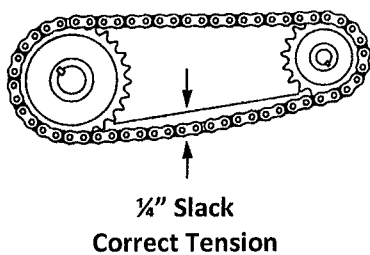
## Drive chains

- Oil auger drive chain once a month. Use a good quality, non-detergent, petroleum-based oil from the list shown in Fig. 3.
- See Fig. 5 for auger drive chain path.

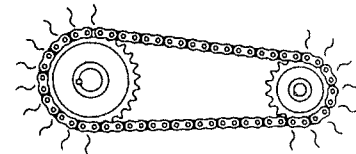
Temperature	Recommended Oil
	Viscosity
20°F to 40°F (-7°C to 4°C)	SAE 20
40°F to 100°F (4°C to 38°C)	SAE 30
100°F to 120°F (38°C to 49°C)	SAE 40
120°F to 140°F (49°C to 60°C)	SAE 50

Fig. 3

- Check chain tension every 20 hours. Adjust as needed using Fig 4 as a guide.



Too Loose



Too Tight

Fig. 4

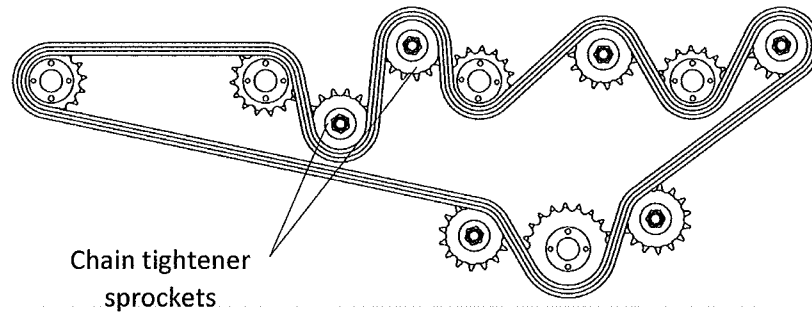


Fig. 5

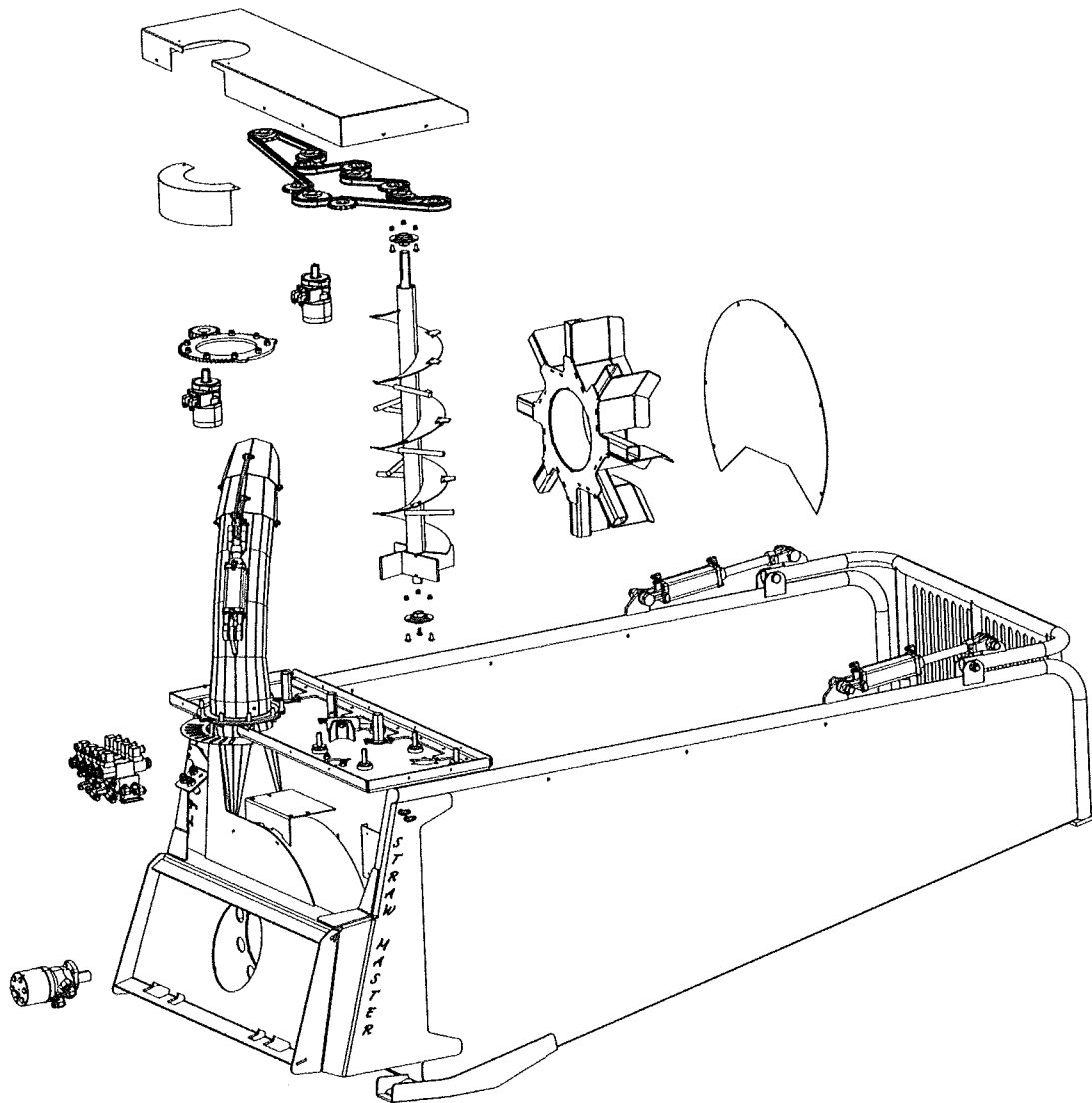


Fig. 6

# ***STRAW - MASTER***

STRAW BLOWER  
Operation & Maintenance Manual

---

**Notes:**